



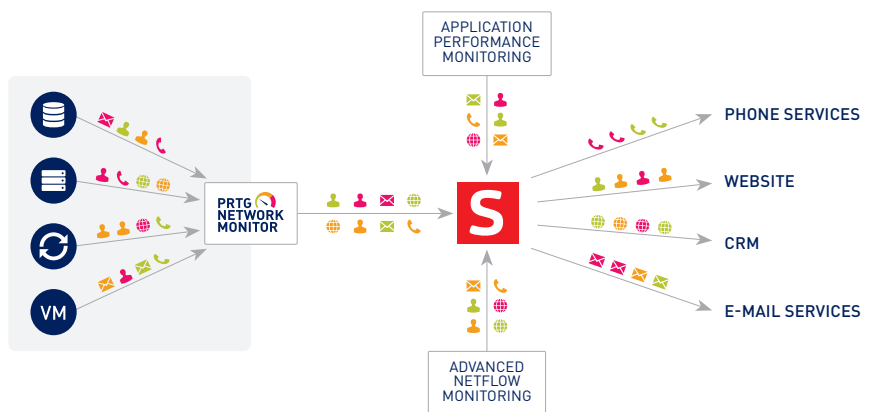
# Monitor – Analyze – Solve

By integrating PRTG with Savision iQ, you can add a fast analytics layer to improve uptime, visualize your IT environment, and integrate all of your IT systems into a single pane of glass.

## Paessler and Savision: Monitoring and Analytics Combined

Savision iQ and PRTG Network Monitor integrate with each other, combining the broad monitoring capabilities of PRTG with Savision iQ's analytics power to discover, analyze, and solve any IT issue before it becomes a problem.

PRTG monitors your IT infrastructure 24/7, discovering all issues and anomalies. In case of any issue – whether it's discovered due to defined thresholds or by “unusual detection” – PRTG will send a notification to Savision iQ. The software gathers information from different sources such as monitoring tools, cloud platforms, or ITSM systems. It analyzes and correlates data and starts troubleshooting using automated incident workflows.

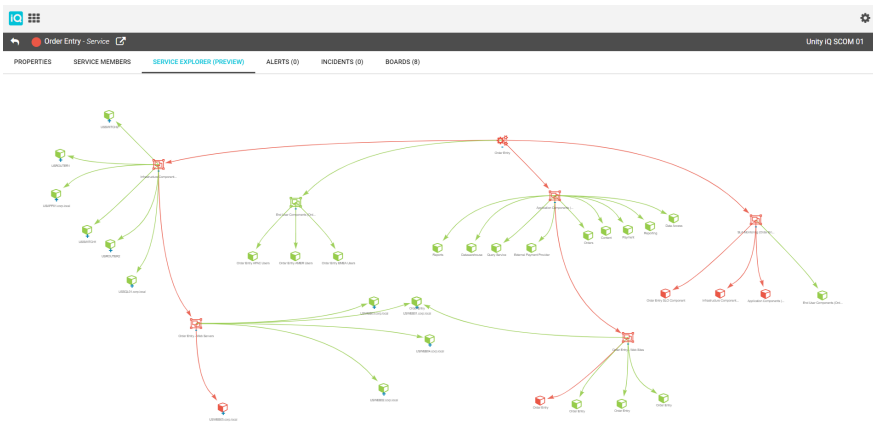


## For Paessler & Savision Customers, This Means:

**Smart Ticketing:** Streamlined alert-handling workflow between IT operations and IT service management and quicker resolution times. Intelligently sort alerts based on service and business orientation, group them as incidents, and forward them to any ITSM system. Receive bidirectional updates as resolution progress is made. Improve your uptime through alert correlation and automated incident management.

**Historical Alert Analysis:** PRTG shows the real-time health of your network environment. In addition, Savision iQ stores all alerts generated from PRTG, providing a rich historical store of what happened when.

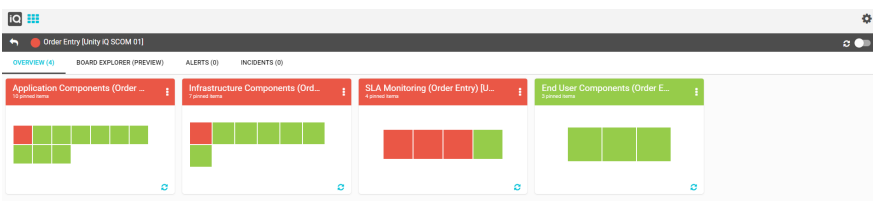
**Visualize your IT Environment:** Based on the network discovery of PRTG, Savision iQ provides a great overview of your IT infrastructure. The Savision iQ dependency diagram shows how all objects are related to one another and helps to quickly analyze where a problem is coming from by drilling down to the underlying issue.



**Single Pane of Glass:** Savision iQ not only integrates with PRTG but also many other IT monitoring tools, public clouds, and ITSM systems within seconds to add alerts, objects, and incidents in one single pane of glass.

**Business Value Dashboards:** Customizable business value dashboards for monitoring service and device health, SLAs, and financial impact of outages, which can be personalized per stakeholder. Calculate your SLAs coming from PRTG and share with your CxO or help desk so everyone has access to this IT data in a business context.

**Scaled up Monitoring:** Savision iQ can help with scaling up your PRTG environment. Due to its big-data back-end it can easily handle multiple PRTG instances and group them together in one large overview. Grow your PRTG monitoring to cover your full IT environment from small to medium-sized business or large enterprise environments.



## Solution Benefits:

- Increased uptime – and faster incident resolution
- Become service-oriented – by grouping your IT monitoring tools into business services
- Show IT value – by sharing dashboards with the organization that show your improved service levels

## ABOUT SAVISION

Savision is the market leader in service-oriented IT monitoring solutions. The company's solutions transform infrastructure and application monitoring data into dashboards that automate and unify IT operations with IT service management workflows. Savision allows companies to maximize the value of existing IT management tools in order to optimize IT service delivery, prevent problems, and reduce service downtime.

Over 800 of the world's most demanding companies, governments, and non-profits have deployed Savision's solutions to visualize, rationalize, and optimize their IT service delivery workflows.

[www.savision.com](http://www.savision.com)

## ABOUT PAESSLER

With PRTG, Paessler AG offers a powerful, affordable and easy-to-use unified monitoring tool. Over 200,000 administrators worldwide use our software, whether it be to monitor their server performance, virtual environments, or even the accessibility of their websites. PRTG is a network analysis solution for Windows.

Get started with network monitoring with PRTG. You'll save time, worry, and money. PRTG is installed in a matter of minutes. Enjoy 100 free sensors, plenty for small networks. Upgrade whenever you like.

[www.paessler.com](http://www.paessler.com)

**CONTACT THE  
UPTIME ALLIANCE TEAM**

[UptimeAlliance@paessler.com](mailto:UptimeAlliance@paessler.com)